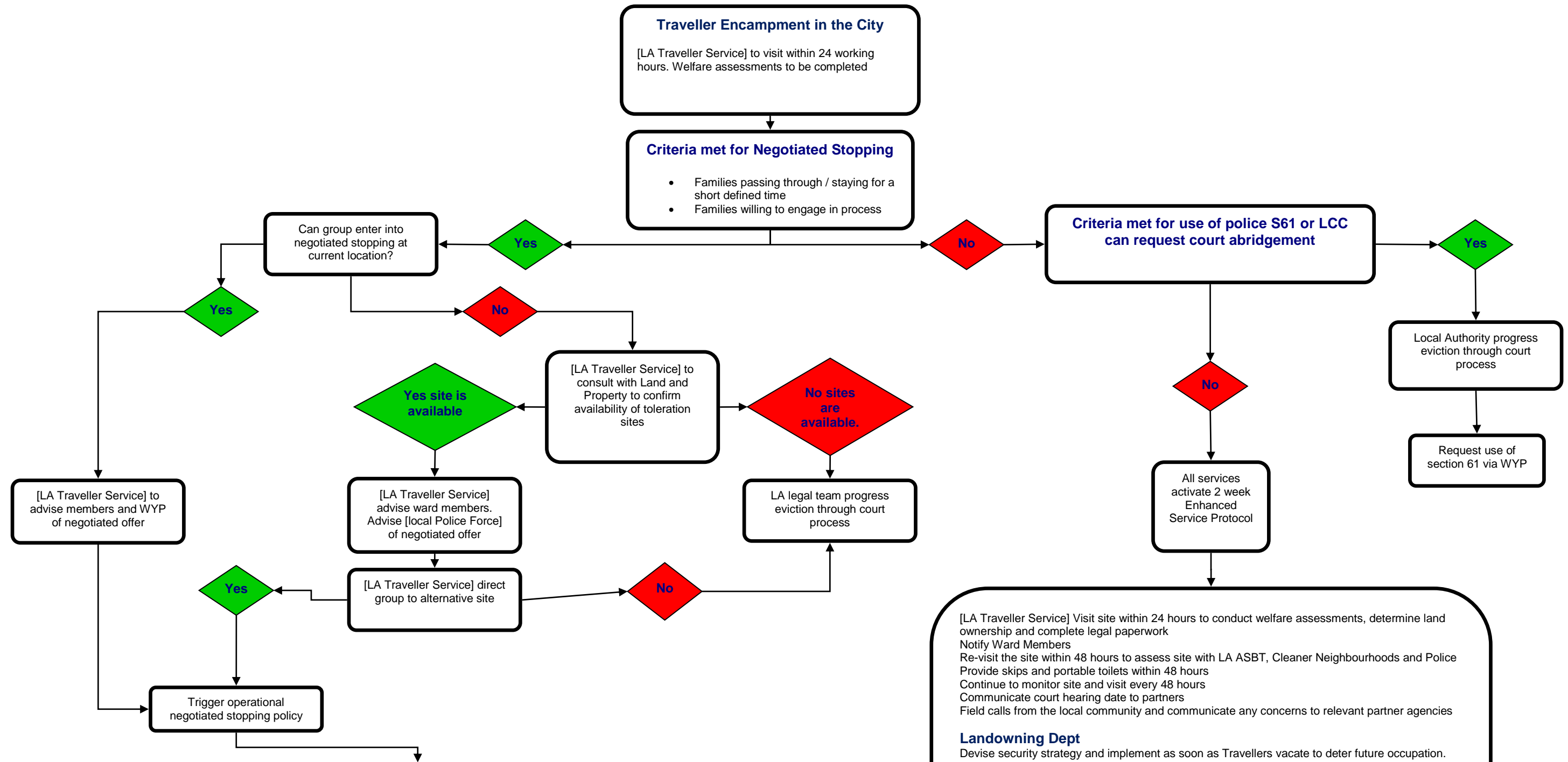


# Your Town/City Partnership Protocol – Negotiated Stopping for Traveller Encampments



<p><b>LA Traveller Service</b></p> <ul style="list-style-type: none"> <li>Sign toleration agreements with families</li> <li>Arrange facilities -skips/toilets</li> <li>Take steps to secure</li> <li>Visit site twice weekly and monitor in accordance with toleration agreement</li> <li>Continued communication with partner agencies</li> </ul> <p><b>Parks and Countryside / Landowning Dept</b></p> <ul style="list-style-type: none"> <li>Support LA Traveller Service to clear/secure sites.</li> </ul> <p><b>Legal Services</b></p> <ul style="list-style-type: none"> <li>Review negotiated stopping agreement.</li> </ul> <p><b>Cleaner Neighbourhoods</b></p> <ul style="list-style-type: none"> <li>Adopt waste management strategy to Environmentally safeguard site.</li> </ul>	<p><b>LA Anti-Social Behaviour Team</b></p> <ul style="list-style-type: none"> <li>Assign officer to open case for ASB throughout duration</li> </ul> <p><b>Police</b></p> <ul style="list-style-type: none"> <li>Trigger local neighbourhood policy through duration</li> <li>Review S61</li> <li>Assess if S62 is applicable</li> </ul> <p><b>Local Advocacy Service</b></p> <ul style="list-style-type: none"> <li>Ongoing advocacy for families.</li> </ul> <p><b>Education Outreach</b></p> <ul style="list-style-type: none"> <li>Support roadside education policy</li> </ul>	<p><b>NHS</b></p> <ul style="list-style-type: none"> <li>Outreach midwifery services alerted</li> </ul> <p><b>LA communications team</b></p> <ul style="list-style-type: none"> <li>Trigger local communication strategy with Ward Members and Local community</li> </ul>
---	--	---

[LA Traveller Service] Visit site within 24 hours to conduct welfare assessments, determine land ownership and complete legal paperwork  
 Notify Ward Members  
 Re-visit the site within 48 hours to assess site with LA ASBT, Cleaner Neighbourhoods and Police  
 Provide skips and portable toilets within 48 hours  
 Continue to monitor site and visit every 48 hours  
 Communicate court hearing date to partners  
 Field calls from the local community and communicate any concerns to relevant partner agencies

**Landowning Dept**  
 Devise security strategy and implement as soon as Travellers vacate to deter future occupation.

**Police**  
 Continue to monitor site and visit every 48 hours

**Cleaner Neighbourhoods [or similar]**  
 Issues CPN notices and follow up process  
 Regular follow up visits – 3 times per week

**LA Anti-Social Behaviour Team**  
 Open a case and visit site regularly to address any concerns

**Communications Team**  
 Communicate with Ward Members and Local Community

**NHS**  
 To conduct outreach site visit